

A Venue for all Occasions

Archer Park is a multi-functional venue and may be hired for weddings, wedding photos and receptions. Seminars, workshops, group functions, business and trade promotions, school and coach tours are most welcome.

The air-conditioned refreshment room can cater for fifty people sitting and seventy to eighty people in a seminar arrangement.

The volunteers (Friends of Archer Park Inc.) offer all visitors to the museum complementary tea, coffee and biscuits.

Archer Park boasts a large selection of tram and rail merchandise for sale.

Opening hours

Sunday to Friday from 9am to 4pm. Closed Saturdays and public holidays.

The Purrey Steam Tram only operates on Sundays between 10am and 1pm. (The tram does not operate from the end of November to the beginning of February.)

Management and Operation

Archer Park Station and Steam Tram Museum is a project of Rockhampton City Council's Heritage Services Unit, a part of the Community and Cultural Development Department. It is supported by a team of dedicated volunteers, The Friends of Archer Park Inc.

Archer Park Station and Steam Tram Museum

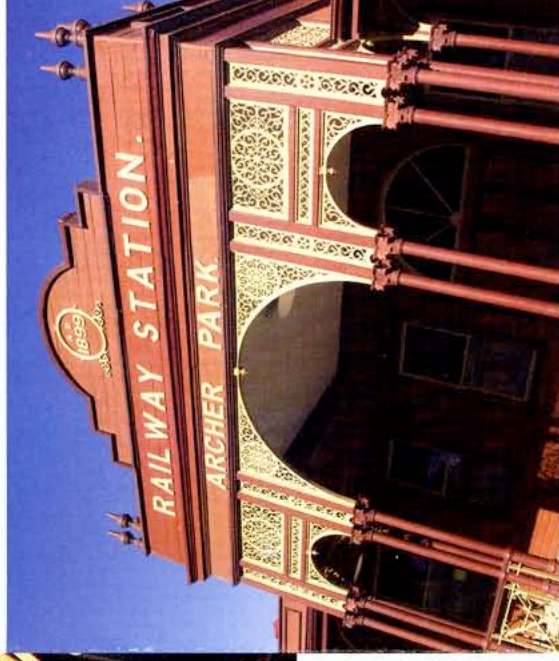


Archer Park Station and Steam Tram Museum



Archer Park Station and Steam Tram Museum
Denison Street (between Cambridge & Archer Streets
backing onto the Northern rail line) Rockhampton
PO Box 243, Rockhampton Q 4700
Phone 07 4922 2774

Fax 07 4927 0120
Email archerpark@ccc.qld.gov.au
Website steamtram.rockhampton.qld.gov.au



..... A Train Lover's Delight





The Archer Park Station Story

The now heritage-listed Archer Park Station opened to the public on December 11, 1899. The station initially serviced only local areas such as the popular seaside destination of Emu Park.

In 1903 the Brisbane to Rockhampton line was established and Archer Park became a major terminal.

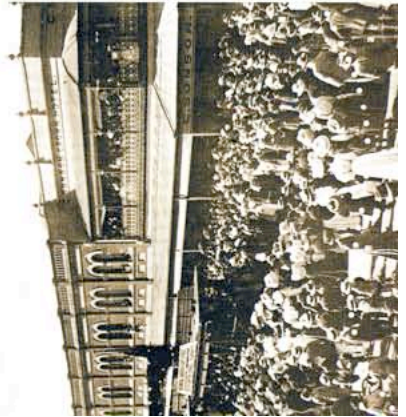
As the station grew busier, a major problem emerged – the platform was too short for some trains – and the use of Archer Park began to decline.

In 1923, the nearby Stanley Street Station was extended.

By 1957 only the shorter rail motors and local trains stopped at Archer Park.

The station was withdrawn from service in 1970 and converted for use as a freight terminal.

Rockhampton City Council petitioned Queensland Rail to hand over the site to be used as a museum and the request was granted in 1990.



Purrey Steam Tram

All aboard! Step back in time and take a ride on the fully restored Purrey Steam Tram, which is believed to be the only operational one of its kind in the world.

Rockhampton was the only provincial city in Queensland to have a street tramway. In 1909, Rockhampton City Council imported four French steam trams. The steam tram service served Rockhampton well for 30 years, but in 1939, as private transport and public buses became more available, the Purrey trams were removed from service and scrapped shortly afterwards.

Tram Facts

- Built in Bordeaux, France
- Began operation on June 5, 1909
- Ticket prices in 1920: Child 1d per journey; Adult 1d per section
- Nine trams and six trailers in the fleet
- Unluckiest was No.15, involved in 3 separate fatalities.
- Last to operate was No. 6
- Ceased operation June 24, 1939
- Carried over 40 million passengers
- Collected more than £350,000 in fares
- Travelled more than 4.5 million miles



The Station and Museum today

Soundscape

Experience a steam train arriving at the station or eavesdrop on conversations of passengers and railway workers from days gone by. The revolutionary Digital Soundscape system, which provides sound effects and commentary, along with object-based exhibitions.

Collections

The museum contains many exhibits associated with the railways and the Tramways. Items have been collected from a variety of sources including private collectors, former rail workers, other rail groups, Queensland Rail, the Capricorn Heritage Rail Association (now the Friends of Archer Park Inc).

Inhabitants

What better way to learn of station life set in the 1930's than to listen to the station's inhabitants? With the aid of the station's soundscape system, the station's status are more than happy to tell you about the way things were in the station's working days.